



External Awards Received between 07/01/2020 and 12/31/2020

At 6-month intervals, we acknowledge and celebrate the success of faculty, staff and students within the SPHHP who have garnered external funding. Listed below are the SPHHP faculty and staff (alphabetized by department and centers) who received new or renewal/continuation awards, as UB Principal Investigators, between 07/01/2020 and 12/31/2020.

BIostatISTICS



Marianthi Markatou, Professor of Biostatistics and Associate Chair of Research and Healthcare Informatics, is PI on a new award from the US Food and Drug Administration for the research project entitled, *Evaluating LRT for Post-Market Surveillance of Adverse Effects*. The project will apply LRT and the pattern discovery method in the context of identification of potentially rare adverse events using data from FAERS and Electronic Health Record data from HEALTHeLINK--the Western New York regional health information

COMMUNITY HEALTH AND HEALTH BEHAVIOR



Sarah Heavey, Clinical Assistant Professor of Community Health and Health Behavior (CHHB), and **Gregory Beehler**, Research Assistant Professor of CHHB, are PIs on a new award from the VA Pain/Opioid CORE's Rapid Start Funding for the project entitled, *A Modified Hub and Spoke Model to Improve Access to Medication for Opioid Use Disorder*. The project will evaluate whether delivery of medication to Veterans for opioid use disorder (MOUD) has been improved following the implementation of a hub and spoke program (i.e., centralized intakes and inductions with MOUD maintenance managed by referring providers).



Jessica Kruger, Clinical Assistant Professor, Department of Community Health and Health Behavior, is PI on a new award from Josiah Macy Jr. Foundation President's Grant program for the project entitled, *Interprofessional Collaboration: Scientific Editing Fellowship*. This project is to help build the capacity of the *Journal of Student-Run Clinics* while enhancing the skills of underrepresented students from a variety of health-related professions.



Lucia Leone, Assistant Professor of Community Health and Health Behavior, is PI on a new award from Community Foundation for Greater Buffalo/J. Warren Perry and Charles Donald Perry Memorial Fund for the research project entitled, *Implementation of a Mobile Market Program Serving Rural Tribal Communities in Western New York*. In collaboration with Seneca Nation Gakwi:yo:h Farms, the project will develop a nascent mobile market program serving lower-income and senior individuals living on the predominantly rural Cattaraugus and Allegany Indian Territories in Western New York. **Anne Lally**, Outreach Coordinator for the Veggie Van study, was instrumental in developing the collaboration.

Dr. Leone also is PI on a continuation award from the National Cancer Institute/NIH, for the project entitled, *Effectiveness and Implementation of a Research Tested Mobile Produce Market Designed to Improve Diet in Underserved Communities*. This study will continue to implement a mobile produce market program with eight organizations nationwide to determine if the effect can be replicated. It also includes development of a best-practices toolkit to help others sustainably implement the program.

EPIDEMIOLOGY AND ENVIRONMENTAL HEALTH



Hailey Banack, Research Assistant Professor, Department of Epidemiology and Environmental Health, is PI on a new award from Regents of the University of California/NIH for the research project entitled, *Abdominal Adipose Tissue Deposits and Cardiometabolic Disease Risk in Postmenopausal Women*. This project capitalizes on a rich scientific resource and will provide new and advanced results that will delineate the importance of abdominal adipose tissue depots in cardiometabolic disease risk and the potential for targeted interventions and prevention efforts.



Jo Freudenheim, SUNY Distinguished Professor and Chair of Epidemiology and Environmental Health, is PI on a continuation award from the National Cancer Institute/NIH for the project entitled, *Interdisciplinary Training in Cancer Epidemiology at UB*. The program provides training and hands-on opportunities for pre-doctoral and post-doctoral fellows to develop research skills in epidemiology, as well as other related disciplines.



Katarzyna Kordas, Associate Professor of Epidemiology and Environmental Health (EEH), is PI on a new award from the National Institute of Environmental Health Sciences/NIH for the project entitled, *Effect of complex mixtures on oxidative stress and cognition in children*. Working with the SAM cohort in Uruguay, which has enrolled 679 1st grade children between the years 2012-19, the study will examine the extent to which chemical mixtures in early-middle childhood affect a molecular process thought to underlie the development of chronic disease, as well as functional endpoints that underlie children's learning and social interactions. **Hailey Banack**, Research Assistant Professor of EEH, **James Olson**, UB Distinguished Professor of EEH, and **Guan Yu**, Assistant Professor of Biostatistics, are Co-Is.



Amy Millen, Associate Professor, Department of Epidemiology and Environmental Health, is PI on a new award from the Bright Focus Foundation for the project entitled, *Interplay of Diet and the Gut Microbiome in Age-Related Macular Degeneration*. The study will examine the associations between the gut microbiome and the prevalence of AMD (intermediate or advanced AMD cases) and reticular pseudodrusen (a biomarker for progression to geography atrophy). **Rachael Hageman Blair**, Associate Professor, Department of Biostatistics, is a Co-I.



Ekaterina Noyes, Professor of Epidemiology and Environmental Health, is PI on a new award from Kaleida Health for the project entitled, *ECRIP Role of Weight Management in Cancer Outcomes*. This project will train clinical research fellows through participation in outcomes research including other related disciplines and skills: qualitative and quantitative methods, clinical epidemiology, analysis of large administrative and clinical databases, implementation and dissemination science.



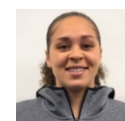
Tia Palermo, Associate Professor of Epidemiology and Environmental Health, is PI on a new award from Deutsche Gesellschaft fur Internationale Zusammenarbeit GmbH for the research project entitled, *GIZ - Real time monitoring of COVID-19 impacts on Tanzanian youth*. The project will use information from adolescent boys and girls and young people in two Southern Highlands regions on how the COVID-19 outbreak affects them, and how it affects their families and communities. It will inform the design, redirection and implementation arrangements of response measures from the Government of Tanzania.



Jean Wactawski-Wende, Dean of SPHHP and SUNY Distinguished Professor of Epidemiology and Environmental Health (EEH), is PI on a 7-year renewal from the National Heart, Lung and Blood Institute/NIH for the project entitled *Women's Health Initiative (WHI) – Regional Center*. As the Northeast Regional Center for the WHI, the study will collect health outcomes and new risk factor data in the postmenopausal women who have been participants since the study launched in 1993. With 70,000 remaining active participants now aged between 78 and 103 years, the extension award will continue to focus on heart failure, atrial fibrillation, VTE, coronary heart disease, peripheral arterial disease (PAD), stroke and sleep disorders, as well as assess dementia, fracture, falls, physical function and mortality. Co-Investigators from EEH are **Hailey Banack**, Research Assistant Professor, **Michael LaMonte**, Research Associate Professor, **Amy Millen**, Associate Professor, and **Heather Ochs-Balcom**, Associate Professor.

Dean Wactawski-Wende also is PI on two continuation awards from Kent Memorial County Hospital for the projects entitled, *WHISH-2 Prevent Heart Failure Study* and *WHISH-2 Prevent Heart Failure Study Outcomes*. An ancillary study to the WHI, the projects will evaluate physical activity, sedentary behavior, muscle strength and the risk of heart failure. **Michael LaMonte**, Research Associate Professor of EEH, is Co-Investigator.

EXERCISE AND NUTRITION SCIENCES



Keiona Nance, MS student in the Athletic Training Program/Exercise and Nutrition Sciences, received a new fellowship award from NATA Research and Education Foundation for the project entitled, *The Effect of Water Stirring on Cold Water Immersion Cooling Rates*. The study will examine whether the core body temperature of exertional heat stroke patients cool at a rate similarly with/without stirring in a cold water immersion. If the rates are similar, medical personnel could treat patients without stirring; thereby allowing them to complete other vital duties and improving patient outcomes. **Riana Pryor**, Assistant Professor of Exercise & Nutrition Sciences, serves as Ms. Nance's mentor.



Todd Rideout, Associate Professor of Exercise and Nutrition Sciences (ENS), is PI on two new awards. The first is from the USDA Agricultural Research Service for the research project entitled, *Protective Effects of Dietary Pulse Flours on Transgenerational Influence of Maternal Obesity*. The project will explore the influence of maternal dry bean consumption in protecting against the transgenerational impact of obesity through potential modulation of the intestinal microbiome in both mothers and offspring.

The second is from the Northarvest Bean Growers Association for the research project entitled, *Dry Bean Health Research Program*. This proposal will explore the influence of maternal dry bean consumption in protecting against the transgenerational impact of obesity through potential modulation of the intestinal microbiome in both mothers and offspring. Maternal obesity programs enhanced susceptibility to obesity and associated metabolic disease risk in offspring.

REHABILITATION SCIENCE



Kirkwood Personius, Clinical Associate Professor, is Co-PI on a new award from the SUNY Research Seed Grant Program for the project entitled, *Improving Function after Peripheral Nerve Injury*. Peripheral nerve injury disproportionately afflicts young healthy people, with large proportions demonstrating persistent weakness. This collaborative project between Drs. Personius, Andreadis (Chemical and Biological Engineering), and Udin (Physiology and Biophysics) will investigate whether NANOG, a gene essential to maintain embryonic stem cells, improves reinnervation of muscle following experimental nerve injury.